

Yes!

I want to join the Chagrin River Watershed Partners, Inc. and be a part of this exciting watershed work.

Chagrin River Watershed Partners, Inc.
Sponsoring Membership \$250

Company Name

Company Contact

Address

Address

City *State* *Zip*

Phone

E-mail

How should we contact you?
 phone e-mail regular mail

Make checks payable to:
Chagrin River Watershed Partners, Inc.

Thank you for your support!

Cut here



Chagrin River Watershed Partners, Inc.

P.O. Box 229 • Willoughby, Ohio • 44096-0229
Phone (440) 975-3870 • Fax (440) 975-3865
www.crwpp.org
Heather Elmer, Director

Our Members

- Auburn Township
- City of Aurora
- Bainbridge Township
- Village of Bentleyville
- Chagrin Falls Township
- Village of Chagrin Falls
- City of Chardon
- Chardon Township
- Claridon Township
- Cleveland Metroparks
- City of Eastlake
- Village of Gates Mills
- Geauga Park District
- Village of Hunting Valley
- City of Kirtland
- Village of Kirtland Hills
- Lake County
- Lake Metroparks
- Mantua Township
- City of Mayfield Heights
- Mayfield Village
- City of Mentor
- Village of Moreland Hills
- Munson Township
- Newbury Township
- Orange Village
- City of Pepper Pike
- Russell Township
- City of Solon
- Village of South Russell
- Waite Hill Village
- City of Wickliffe
- City of Willoughby
- City of Willoughby Hills
- Village of Woodmere

Chagrin River Watershed Partners, Inc. strives to preserve and enhance the scenic and environmental quality of the ecosystem of the Chagrin River and its watershed in a manner that assures a sustainable future for people, plants and animals.



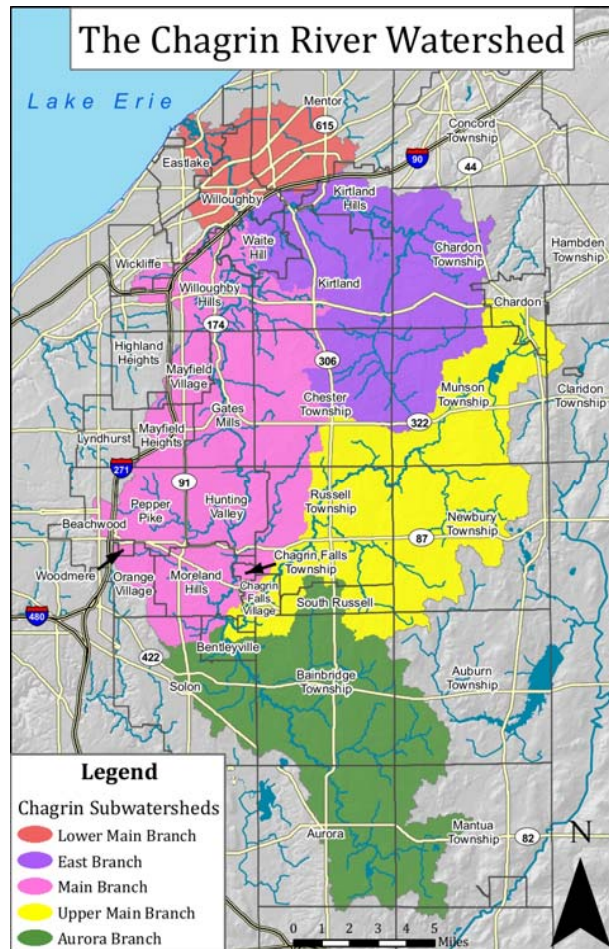
Membership
in the
Chagrin River Watershed Partners, Inc.

Participate in the Chagrin River Watershed Partners

Become a Sponsoring Member!

Who are the Chagrin River Watershed Partners?

CRWP was formed in 1996 by 16 communities to provide assistance with flooding, erosion and water quality problems. Today CRWP represents 35 cities, villages, townships, counties, and park districts - 91% of the watershed. In the past, CRWP membership has been limited to the watershed's local governments. For an annual membership fee, these local governments have access to the professional services and technical advice of

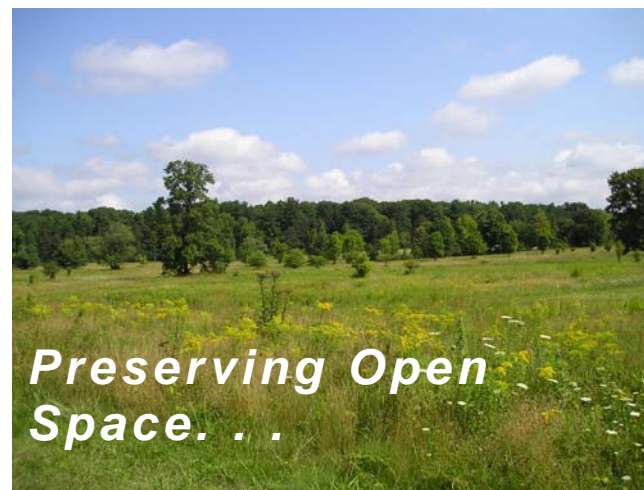


CRWP's staff and the guidance of other participating communities. CRWP membership includes assistance with funding opportunities, guidance with natural resource management, support with implementation of the NPDES Phase II requirements, and other services as communities continue to manage their natural resources.

What is a CRWP Sponsoring Member?

In recognition that CRWP serves many other constituents in its work for local governments, a Sponsoring Member level of membership is available. This level enables both private and public sector organizations and businesses to support the work of CRWP, to be recognized by CRWP member communities, and to access CRWP professional staff.

Sponsoring Members contribute annually to CRWP to support its unique work on locally-driven, prevention-focused, cost-effective methods to address flooding, erosion, and water quality problems. These members may include consulting firms, attorneys, homebuilders, developers, and others interested in innovative approaches to development.



What Do Sponsoring Members Pay?

Sponsoring Memberships are available for \$250.

What are the Benefits of Sponsoring Membership?

Sponsoring Members receive recognition in CRWP's annual report and at CRWP watershed meetings, workshops and



presentations to groups across the State. Sponsoring Members also receive CRWP's annual report summarizing CRWP's research and current watershed management information.

In addition, Sponsoring Members are invited to participate in CRWP quarterly Board meetings as non-voting members. At these Board meetings, Sponsoring Members will meet with staff, learn about the latest land use issues, research, and legal opinions impacting watershed management and meet with engineers, planners, and local elected officials and community staff working on land use and development issues in Northeast Ohio.

. . . Promoting Best Practices

