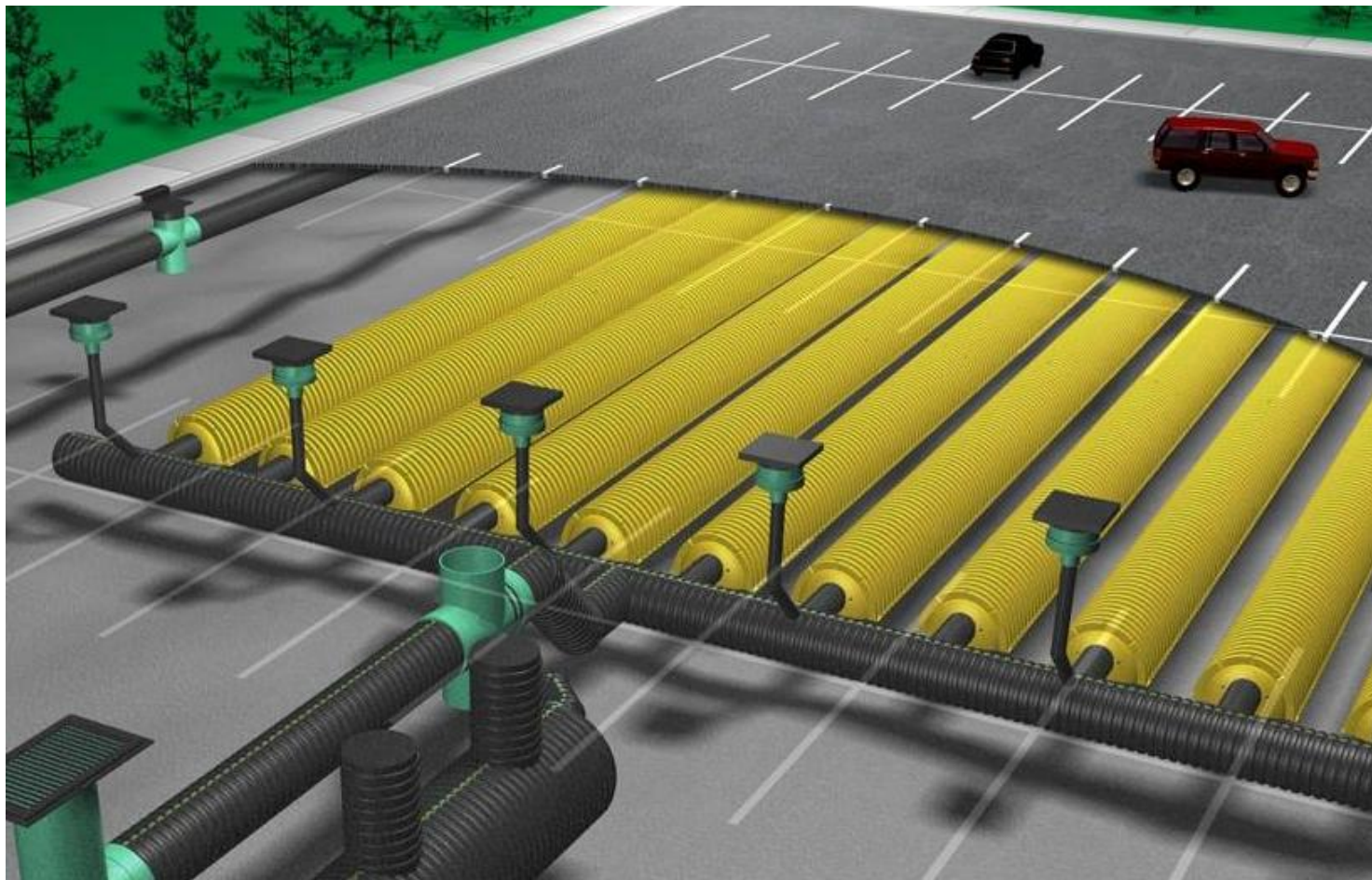


# INSPECTION & MAINTENANCE OF UNDERGROUND STORMWATER SYSTEMS



Greg Spires, PE  
[greg.spires@ads-pipe.com](mailto:greg.spires@ads-pipe.com)  
614.325.0032



Pretty  
Handy  
Girl.com





**WARNING**

To reduce the risk of fire:

- 1. ONLY use for drying, never washed fabric.
- 2. DO NOT dry clothes containing foam rubber, pillows, or similarly textured fabric like blankets.
- 3. DO NOT put clothes with flammable liquids or cleaning solvents in the dryer.
- 4. DO NOT put clothes with volatile or flammable oil in the dryer, as these oils may catch fire during drying. Do not use the remaining oil, the fabric may catch on fire by itself.
- 5. ALWAYS check for lint before each load.

**CAUTION**

A hot surface warning.

1. Avoid use of plastic containers and other materials that may melt or catch fire.

**MUST BE EXHAUSTED OUTDOORS.** Care must be taken to prevent the accumulation of lint around the exhaust opening and in the surrounding area.

© 2000 LG Electronics Inc.

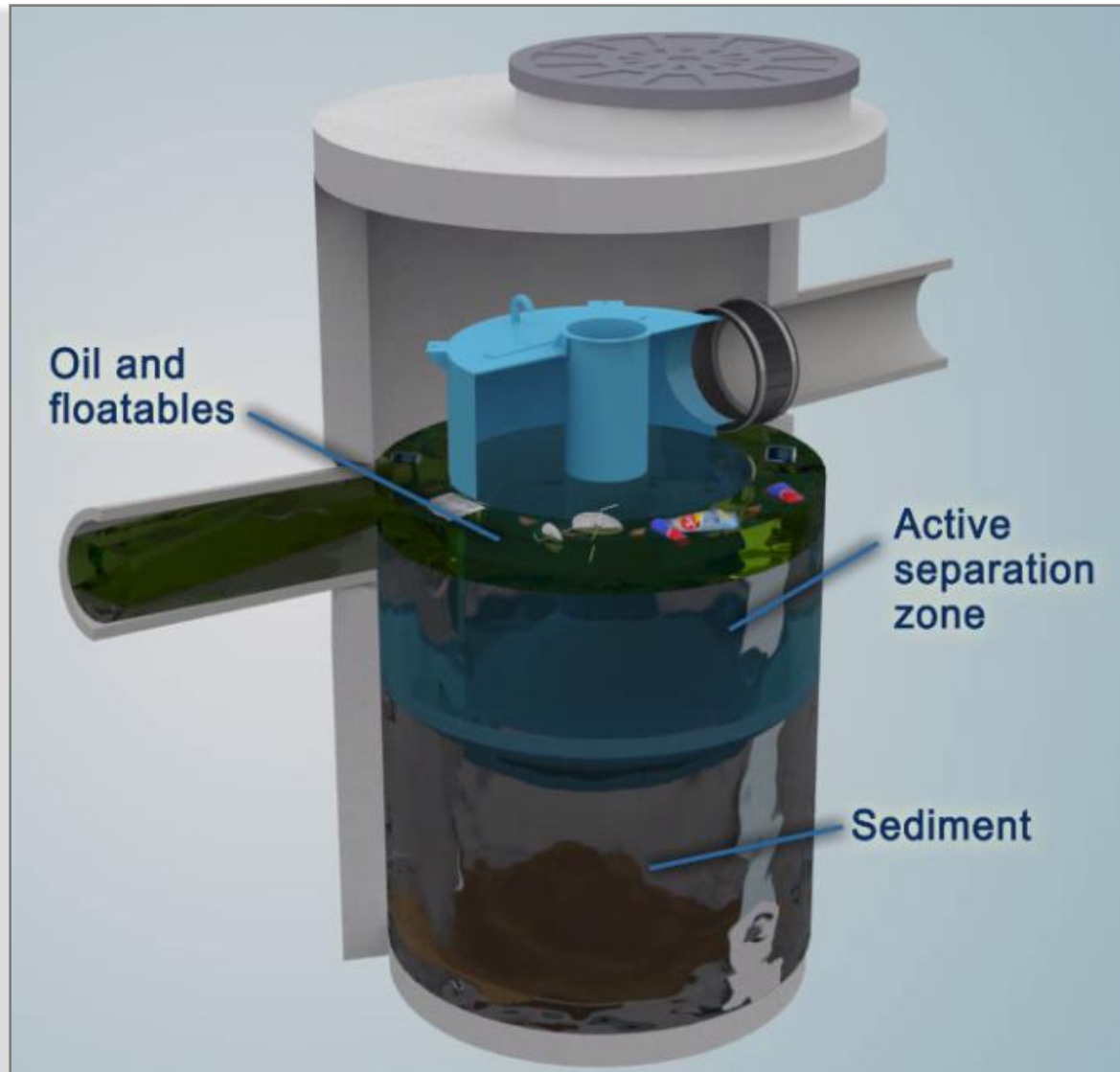
# **TYPES OF UNDERGROUND STORMWATER SYSTEMS**



# CATCH BASIN INSERTS



# HYDRODYNAMIC SEPARATOR



# UNDERGROUND DETENTION



# WHAT TO LOOK FOR



Ponding?  
Leaves?  
Sediment?  
Trash?









# Catch Basin Inserts





# Separators





# Underground Detention

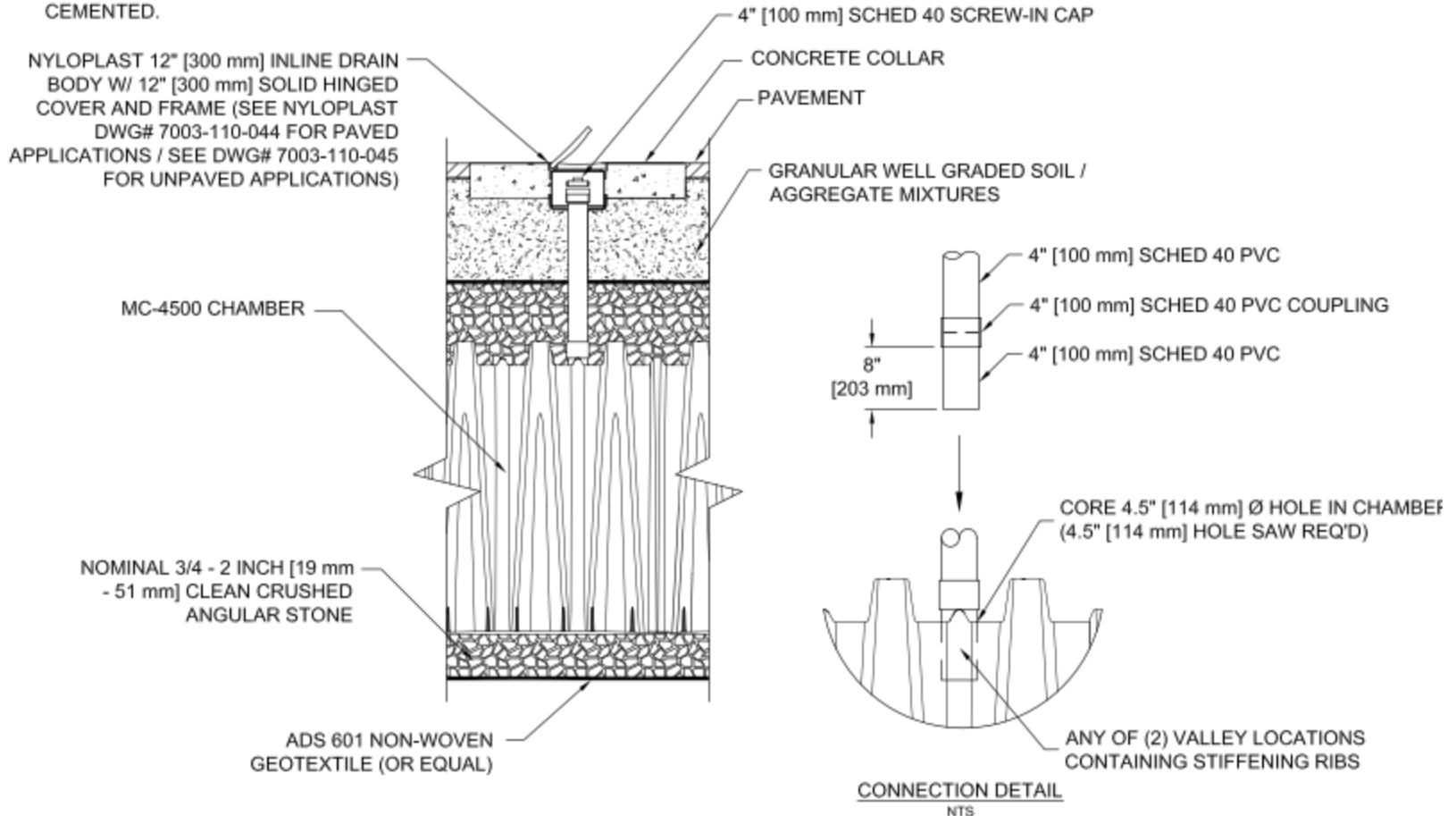




# Underground Detention

## NOTES:

1. INSPECTION PORTS MAY BE CONNECTED THROUGH ANY OF (2) CHAMBER CORRUGATION VALLEYS CONTAINING A STIFFENING RIB.
2. ALL SCHEDULE 40 FITTINGS TO BE SOLVENT CEMENTED.



# Underground Detention

**BEFORE**



# **INSPECTION & MAINTENANCE**

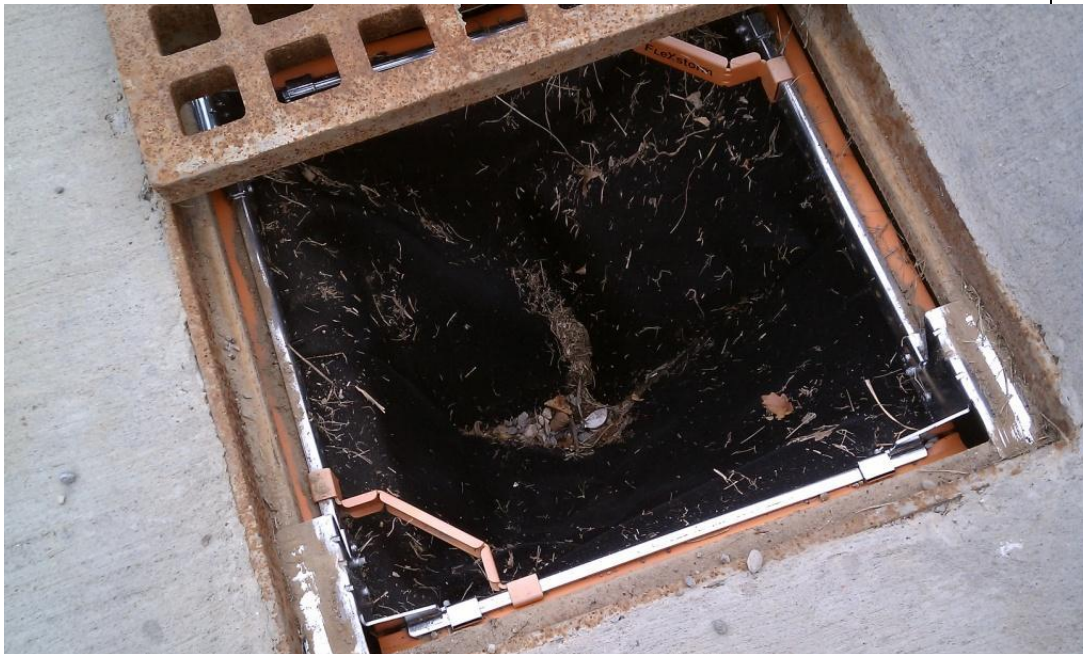
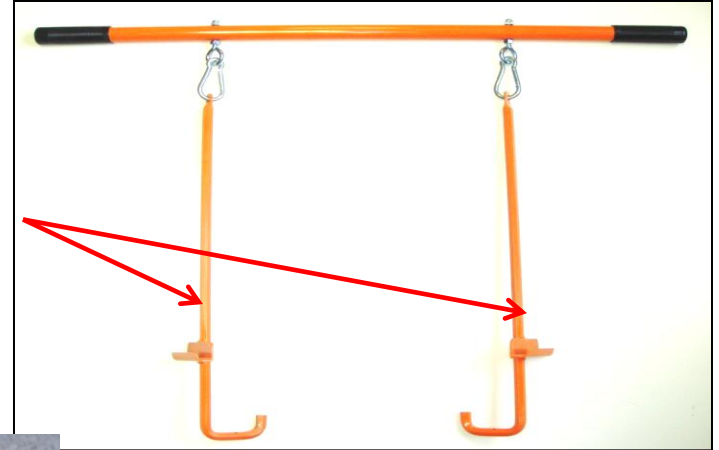


# Catch Basin Inserts



# Catch Basin Inserts

Inlet  
Filter  
Hooks





# Separators



Close-up of Valve



# Separators



# Underground Detention





# Underground Detention

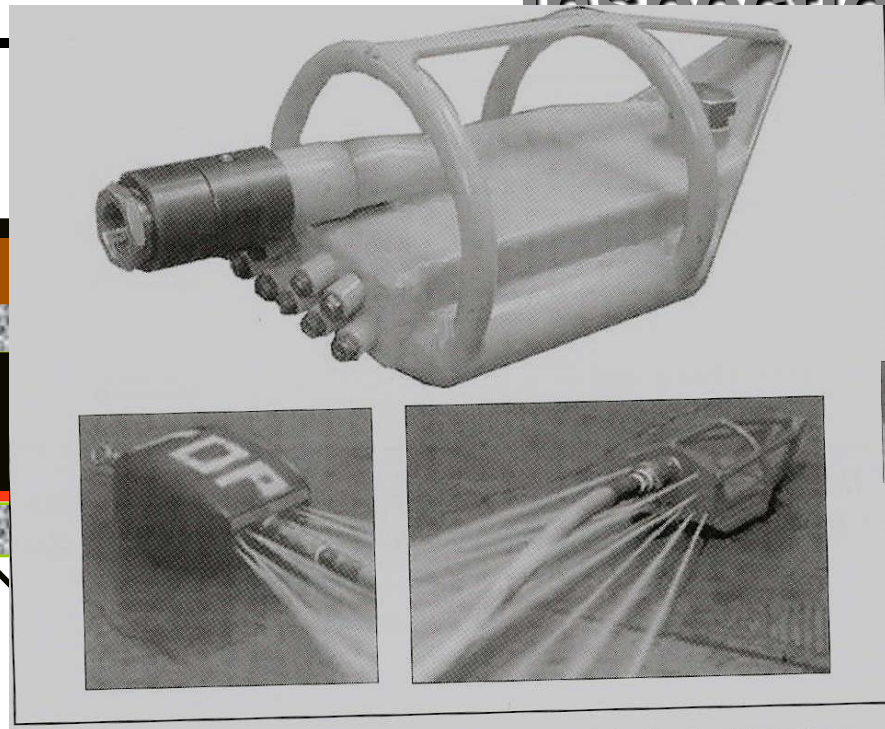
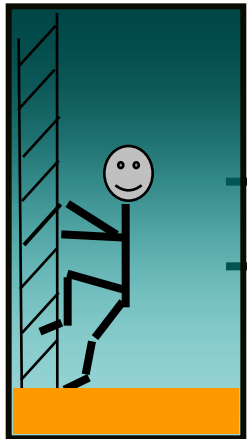


Jet-Vac  
Operation

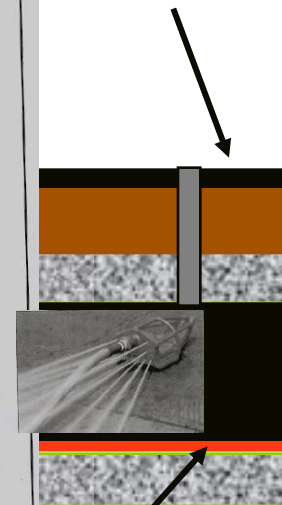


# Underground Detention

Wrap Chambers  
in Non-  
Filter



Inspection Ports



Between Stone & Chamber

Manhole Access Point

# Underground Detention

**AFTER**







**[www.stormtech.com](http://www.stormtech.com)**

**[www.hydro-int.com](http://www.hydro-int.com)**





# QUESTIONS?



***www.ads-pipe.com***

