



Port Authority of Eastlake
Park Planning Project
Public Meeting

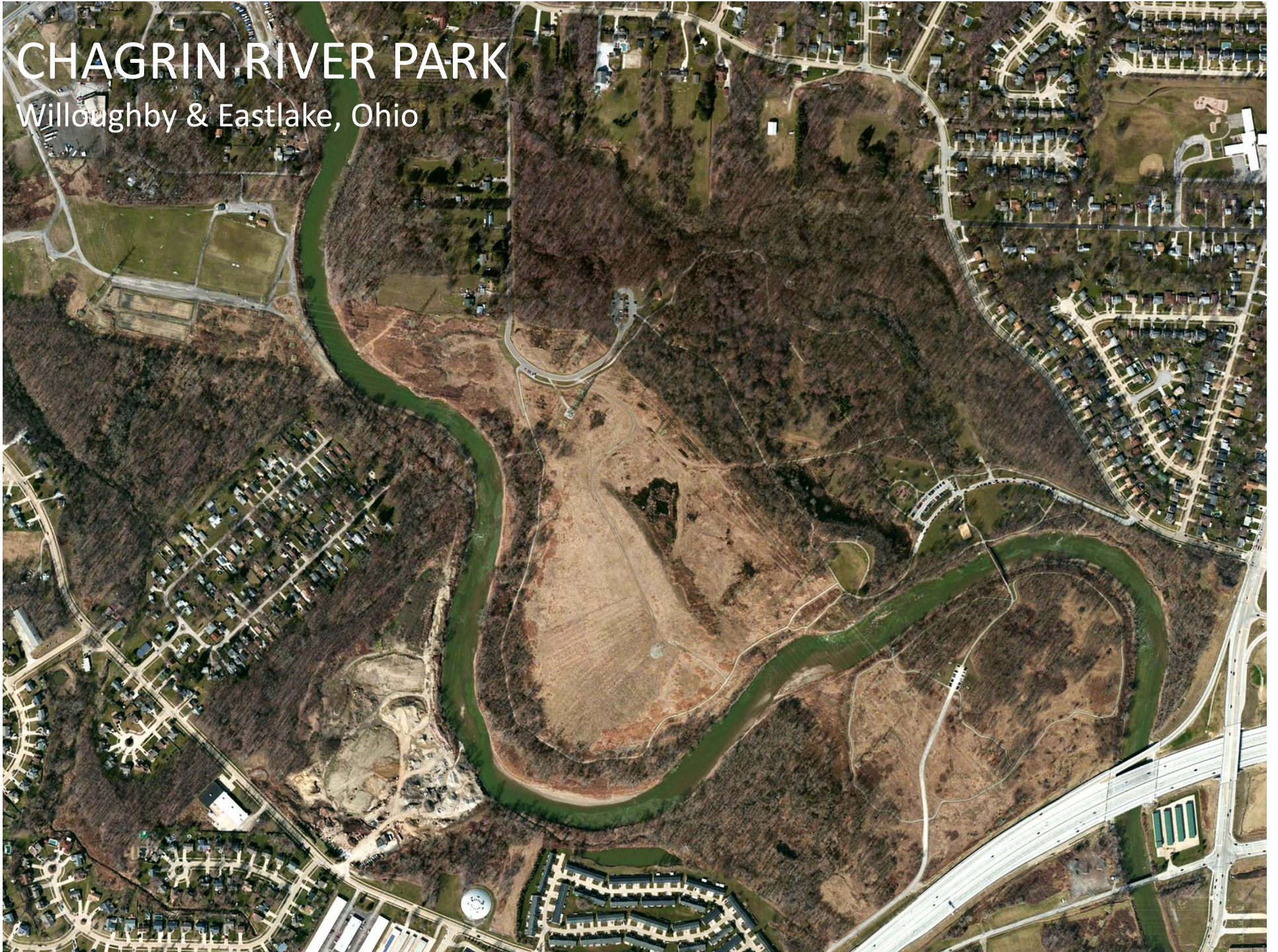
April 10, 2013



MKSK

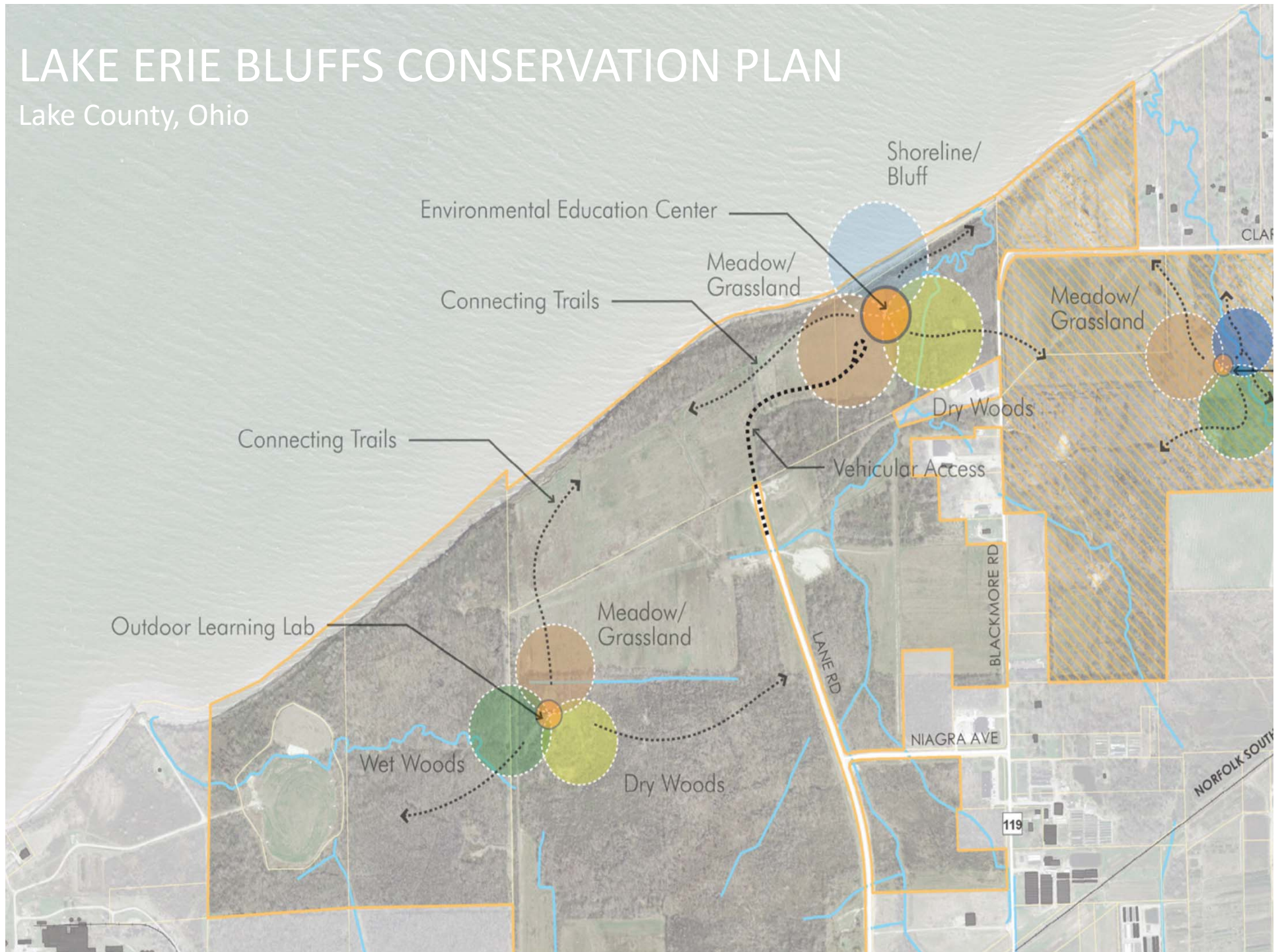
CHAGRIN RIVER PARK

Willoughby & Eastlake, Ohio



LAKE ERIE BLUFFS CONSERVATION PLAN

Lake County, Ohio



LAKE ERIE BLUFFS CONSERVATION PLAN



GIRDLED ROAD PLAN



Thanks to the
Lake Geauga Fund of
The Cleveland Foundation
for providing funding for this park
planning project.

[http://www.clevelandfoundation.org
/grants/lake-geauga-fund/](http://www.clevelandfoundation.org/grants/lake-geauga-fund/)



STEERING COMMITTEE

- John Sima - Owner of Sima Marina and Chair of Eastlake Port Authority
- Chris Aune – Port Authority of Eastlake
- Cindy Quinn-Hopkins – Eastlake Councilwoman; Chair of Eastlake Economic Development Committee
- Chris Woodin - City of Willoughby Councilman, Council Rep on Eastlake Port Authority
- Laura DePledge - Eastlake Councilwoman; Council Rep on Eastlake Port Authority
- Mark Cain – Eastlake Port Authority
- Eric Stechschulte - Lake MetroParks

STAKEHOLDERS

- 1. Port Authority of Eastlake** – Chris Aune
- 2. Chagrin River Watershed Partners, Inc.** – Amy Brennan
- 3. Eastlake**
 - a. Cindy Quinn- Hopkins
 - b. Laura DePledge
 - c. Economic Community Development Council
 - d. Mayor Ted Andrzejewski
 - e. John Stigalt – Building Commissioner & Floodplain Administrator
 - f. Mike Semik – Service Director
- 4. Willoughby**
 - a. Chris Woodin
 - b. Mayor David Anderson
 - c. Jack Gorka – WWTP
 - d. Judean Banker – Parks and Rec
 - e. Angelo Tomaselli & Ken Wetzel – Service Dept.
- 5. Lake Metroparks** – Eric Stechschulte
- 6. Lake County Port Authority** – John Loftus
- 7. Lake County Coastal Plan** – Jason Boyd as County Administrator
- 8. Chagrin River Salmon Association** – Barry Butera
- 9. Chagrin Lagoons Yacht Club** – Stan Leff
- 10. Chagrin River Canoe and Kayak Livery** – Bill Alford
- 11. First Energy** – Doug Hogan and Richard Wagner

Introductions Planning Process / Approach Overview

1. Initial Facilities / Needs Assessment
 - a. Stakeholder Engagement
2. Physical Inventory and Analysis
 - a. Steering Committee Review Meeting
3. Conceptual Design Alternatives
 - a. Charrette / Design Workshop
 - b. Steering Committee Review Meeting
 - c. Public Open House
4. Conceptual Master Plan Refinement
 - a. Steering Committee Review Meeting
5. Finalize Conceptual Master Plan Document
 - a. Steering Committee Review Meeting
 - b. Master Plan Adoptions
6. Review & Discuss Site Development / Enhancement Issues, Constraints, and Operations
7. Discuss Park Operations / Management
8. Review & Discuss Project Timeline and Meetings Schedule
9. Open Discussion

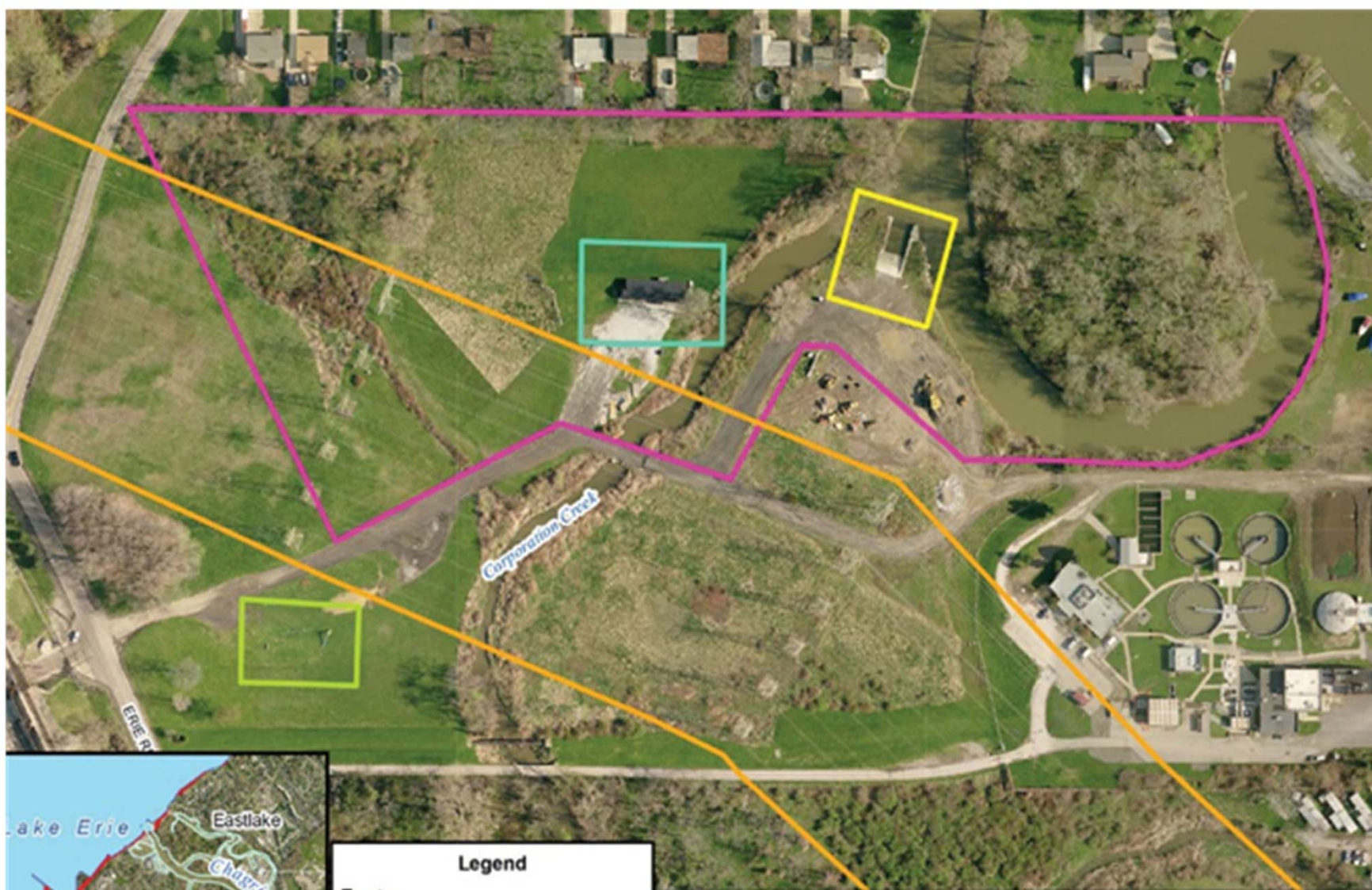
STAKEHOLDER ENGAGEMENT

- Project Steering Committee meetings (6 meetings)
- Stakeholder Interviews (estimate 6-10 meetings)
- Design Workshop/Charrette
- Community Newsletters
- Internet Survey (Survey Monkey™) / Websites / Blogs / Social Media

EXISTING REGIONAL PLANNING STUDY DOCUMENTS

Their findings, recommendations, guiding principles, and development guidelines/standards constitute the framework for this park master plan effort.

- Lake County Coastal Plan
- Eastlake Comprehensive Land Use Plan
- Chagrin River Watershed Balanced Growth Plan *(Lake Erie Balanced Growth Program, the Lake Erie Protection & Restoration Plan, and the Chagrin River watershed Action Plan)*



Legend

Feature

- Eastlake Port Authority boat ramp
- CEI power lines location
- Playground
- Project Area
- Salmon Association canoe livery
- Municipal Boundaries

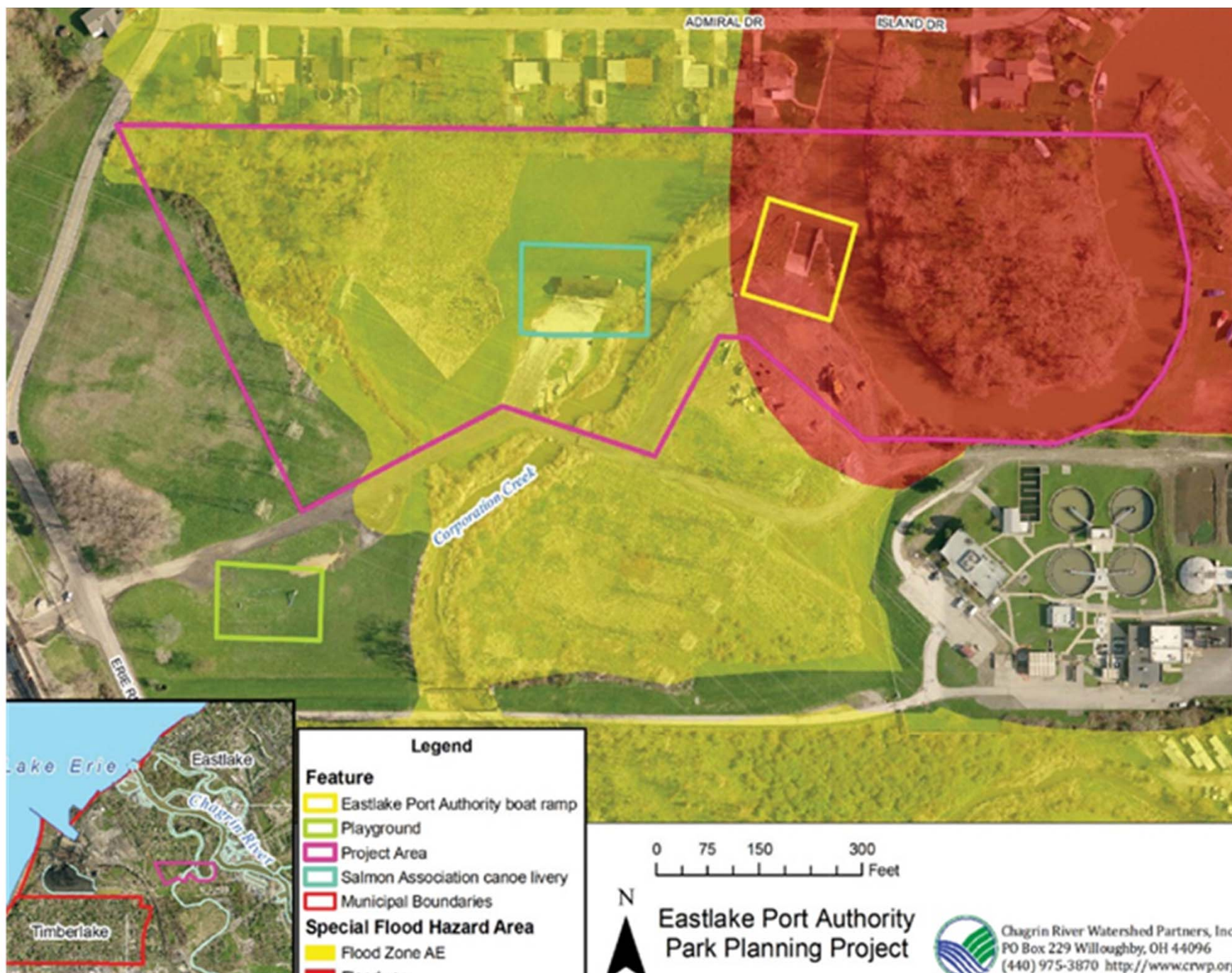
0 75 150 300
Feet



**Eastlake Port Authority
Park Planning Project**



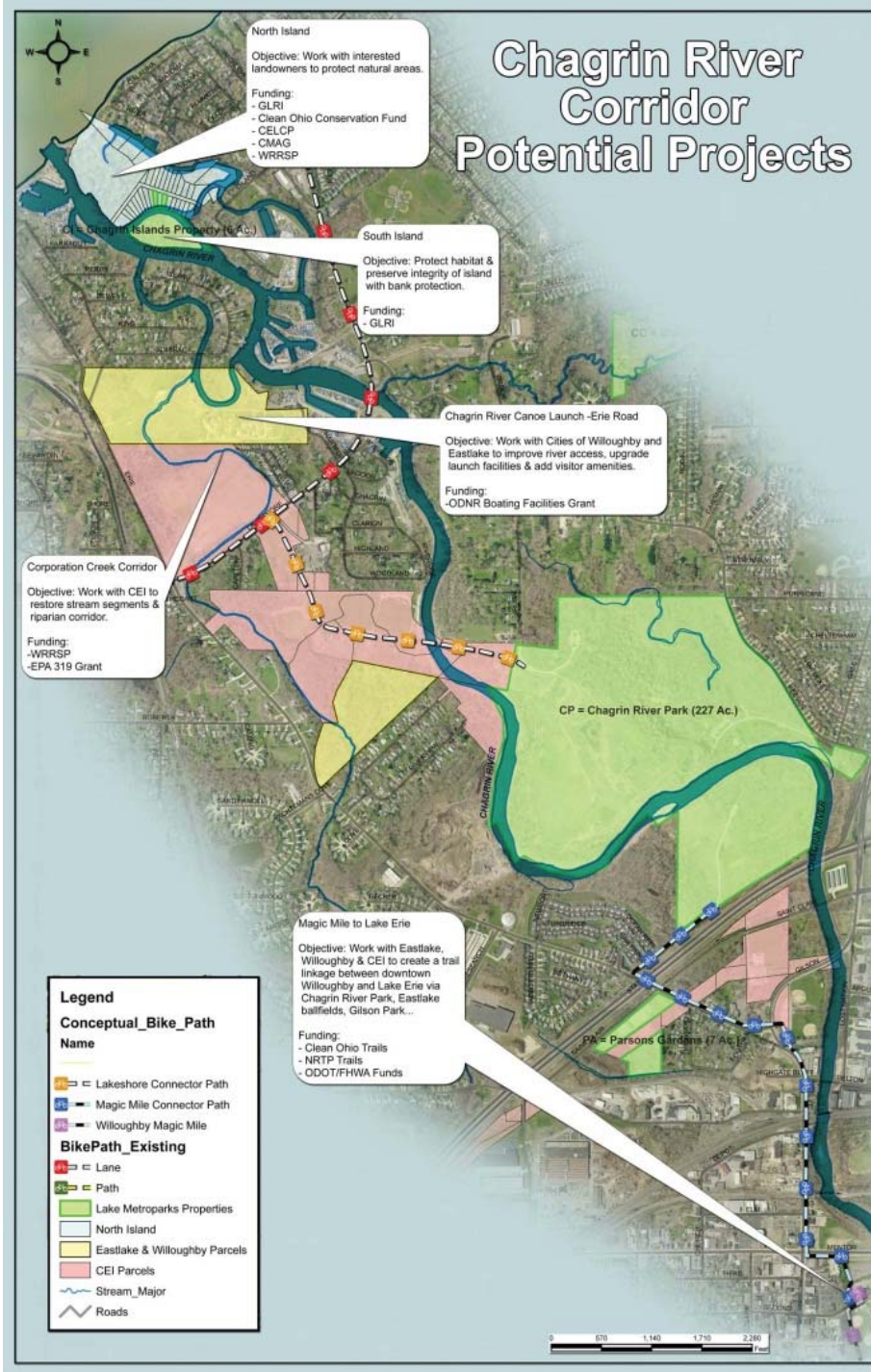
Chagrin River Watershed Partners, Inc.
PO Box 229 Willoughby, OH 44096
(440) 975-3870 <http://www.crvp.org>



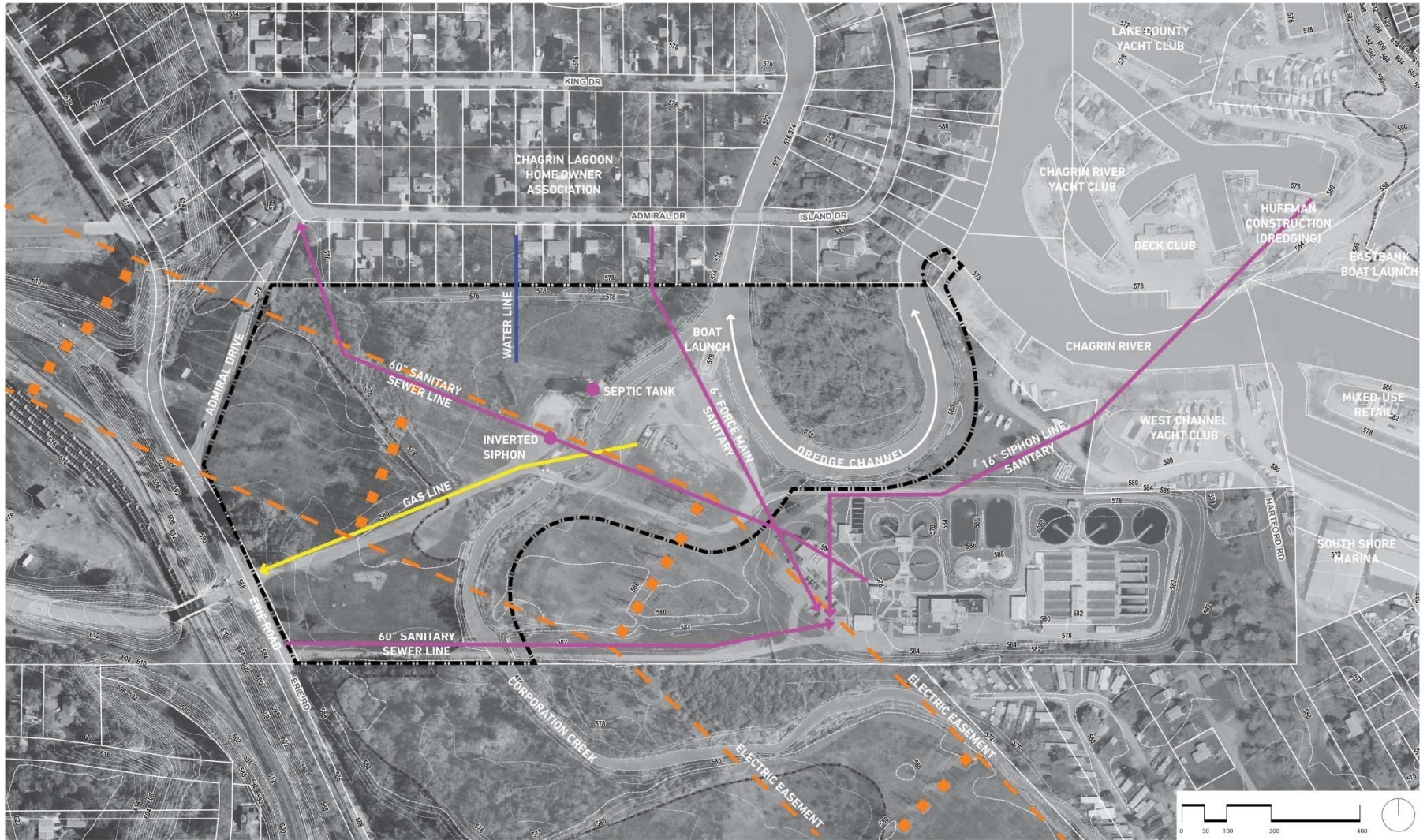
REVIEW AND DISCUSS SITE DEVELOPMENT / ENHANCEMENT ISSUES, CONSTRAINTS, AND OPPORTUNITIES

1. Project Study Area Boundary / Limits
2. Flood Zone and Flooding Restrictions
3. First Energy Power Transmission Easement
4. River and Tributary Channel Protection / Restoration
5. Existing Land Use
6. Site Access Needs, Opportunities, and Restrictions
 - a. Current Internal Landuse, Operations
 - b. Adjacent Property Operations
 - c. Future Perimeter Development Considerations
 - d. Vehicular, Pedestrian, Watercraft, etc.
7. Support Facilities / Infrastructures
8. Safety, Security, and Vandalism
 - a. Site Facilities
 - b. Public users

Chagrin River Corridor Potential Projects









CHAGRIN RIVER SALMON ASSOCIATION (CRSA) BUILDING/ENVIRONS



CRSA – ANNUAL YOUTH FISHING EVENT



LAUNCH RAMP ENVIRONS



CORPORATION CREEK -DRAINAGEWAY



- A PICNIC AREA**
- THREE SEASON PICNIC SHELTER W/ RESTROOM
 - CONCRETE PATIO
 - DRINKING FOUNTAIN (ON BUILDING)
 - SITE FURNITURE (TABLES, BENCHES, TRASH RECEPTACLES)
 - FORMAL LAWN W/WOOD GAZEBO STRUCTURE (WEDDINGS/SMALL CONCERTS)
 - ADVENTURE/NATURE PLAYGROUND AREA
 - OPEN RECREATION LAWN AREA
 - REFORESTATION/CANOPY VEGETATION
 - CREATE FOUR SEASONS ENHANCEMENT, PROVIDE BUFFER & SHADE, AND CREATE OR DEFINE VARIOUS PARK SPACES
 - SITE LIGHTING (SECURITY, EVENING PROGRAM FUNCTIONS)
 - ACCOMMODATE YOUTH FISHING EVENT, TEMPORARY STRUCTURES

- B LAUNCH RAMP AREA**
- IMPROVE OR REPLACE EXISTING STREAM/CHANNEL CULVERT STRUCTURE
 - MIN. 20' VEHICLE & 4' PEDESTRIAN W/ GUARDRAILS/HANDRAILS
 - ASPHALT PAVEMENT & DEFINE ROADWAY/PARKING AREAS
 - 22' WIDE ROADWAY & 12' X 55' TRAILER SPACES (#20)
 - CREATE ASPHALT SETBACK BUFFER ZONES
 - STREAM BANKS/CORRIDOR, GAS WELL EQUIPMENT, ELECTRIC TRANSMISSION TOWER BASES (INTRODUCE VEHICULAR GUARD RAIL AT TOWER BASES)
 - PROVIDE HEAVY DUTY SCORED CONCRETE PAVEMENT ABOVE EXISTING RAMP
 - INTRODUCE PEDESTRIAN AGGREGATE TRAIL LINKAGE TO PICNIC AREA/RESTROOMS (INSTALL VEHICULAR GATES)

- C WATERCRAFT RENTAL**
- RELOCATE CANOE/KAYAK CONCESSION RENTAL AREA
 - SMALL/SEMI-ENCLOSED STRUCTURE, TRANSPORT/TRAILER AREA, EQUIPMENT LAYOUT, I.E. LIFE PRESERVERS, PADDLES, ETC.
- D TERRACE SEVERE STREAM CHANNEL EMBANKMENT EROSION ZONES & TO ACCOMMODATE SHORT-TERM WATERCRAFT TIE-UP**
- PROPOSED REALIGNMENT OF EXISTING ACCESS ROAD CONNECTION TO CAPTURE / ENHANCE RIVER PARK ENVIRONS

- E TRAIL DEVELOPMENT**
- MULTI-USE PATH ASPHALT (10' WIDE) REGIONAL BIKEWAY CONNECTIVITY
 - COMPACTED AGGREGATE PATHWAY (6' WIDE)
 - NATURE TRAILS, NATURAL OR BARK CHIP SURFACE
- F SITE SIGNAGE**
- REGULATORY
 - FACILITY/PARK AREAS, INFORMATIONAL
 - EDUCATIONAL/INTERPRETIVE

- G STREAM/CHANNEL RESTORATION (CORPORATION CREEK)**
- CLEAN UP CONSTRUCTION/TRASH DEBRIS
 - DETER OR REDUCE EXISTING EROSION CONDITIONS
 - NATURALIZE STREAM CHANNEL APPEARANCE
 - SHALLOW STEEP SLOPING BANKS, LOWERED FLOODPLAIN & CREATE STABLE GEOMETRY
 - INTRODUCE NATIVE TREES & SHRUBS PLANTED ALONG BANKS
 - IMPROVE WATER QUALITY & POLLUTANT PROCESSING
 - BETTER HABITAT FOR FISH & WILDLIFE
 - ENHANCE AQUATIC & UPLAND HABITAT ZONES
 - DREDGE NORTHERN SECTION OF CREEK TO IMPROVE SMALL WATERCRAFT NAVIGATION

- H NATURAL AREA / LAND LAB**
- PEDESTRIAN BRIDGE - 6 FEET WIDE
 - NATURE TRAIL, CLEARED DIRT PATH OR BARK CHIP SURFACE
 - WETWOODS CONDITIONS - POTENTIAL BOARDWALKS
 - INTRODUCE SHORELINE ACCESS STEEL DECK STRUCTURES
 - PROPOSED ELEVATED OBSERVATION TOWER (LOWER LEVEL WILD BIRD BLIND)
- I EXISTING SALMON ASSOCIATION BUILDING**
- ARCHITECTURALLY ENHANCE OR IMPROVE FACADE
 - PROVIDE SANITARY SEWER CONNECTION



MKSK



- A PICNIC AREA**
- THREE SEASON PICNIC SHELTER W/ RESTROOM
 - CONCRETE PATIO
 - DRINKING FOUNTAIN (ON BUILDING)
 - SITE FURNITURE (TABLES, BENCHES, TRASH RECEPTACLES)
 - FORMAL LAWN W/WOOD GAZEBO STRUCTURE (WEDDINGS/SMALL CONCERTS)
 - ADVENTURE/NATURE PLAYGROUND AREA
 - OPEN RECREATION LAWN AREA
 - REFORESTATION/CANOPY VEGETATION
 - CREATE FOUR SEASONS ENHANCEMENT, PROVIDE BUFFER & SHADE, AND CREATE OR DEFINE VARIOUS PARK SPACES
 - SITE LIGHTING (SECURITY, EVENING PROGRAM FUNCTIONS)
 - ACCOMMODATE YOUTH FISHING EVENT, TEMPORARY STRUCTURES

- B LAUNCH RAMP AREA**
- IMPROVE OR REPLACE EXISTING STREAM/CHANNEL CULVERT STRUCTURE
 - MIN. 20' VEHICLE & 4' PEDESTRIAN W/ GUARDRAILS/HANDRAILS
 - ASPHALT PAVEMENT & DEFINE ROADWAY/PARKING AREAS
 - 22' WIDE ROADWAY & 12' X 55' TRAILER SPACES (#20)
 - CREATE ASPHALT SETBACK BUFFER ZONES
 - STREAM BANKS/CORRIDOR, GAS WELL EQUIPMENT, ELECTRIC TRANSMISSION TOWER BASES (INTRODUCE VEHICULAR GUARD RAIL AT TOWER BASES)
 - PROVIDE HEAVY DUTY SCORED CONCRETE PAVEMENT ABOVE EXISTING RAMP
 - INTRODUCE PEDESTRIAN AGGREGATE TRAIL LINKAGE TO PICNIC AREA/RESTROOMS (INSTALL VEHICULAR GATES)

- C WATERCRAFT RENTAL**
- RELOCATE CANOE/KAYAK CONCESSION RENTAL AREA
 - SMALL/SEMI-ENCLOSED STRUCTURE, TRANSPORT/TRAILER AREA, EQUIPMENT LAYOUT, I.E. LIFE PRESERVERS, PADDLES, ETC.
- D TERRACE SEVERE STREAM CHANNEL EMBANKMENT EROSION ZONES & TO ACCOMMODATE SHORT-TERM WATERCRAFT TIE-UP**
- PROPOSED REALIGNMENT OF EXISTING ACCESS ROAD CONNECTION TO CAPTURE / ENHANCE RIVER PARK ENVIRONS

- E TRAIL DEVELOPMENT**
- MULTI-USE PATH ASPHALT (10' WIDE) REGIONAL BIKEWAY CONNECTIVITY
 - COMPACTED AGGREGATE PATHWAY (6' WIDE)
 - NATURE TRAILS, NATURAL OR BARK CHIP SURFACE
- F SITE SIGNAGE**
- REGULATORY
 - FACILITY/PARK AREAS, INFORMATIONAL
 - EDUCATIONAL/INTERPRETIVE

- G STREAM/CHANNEL RESTORATION (CORPORATION CREEK)**
- CLEAN UP CONSTRUCTION/TRASH DEBRIS
 - DETER OR REDUCE EXISTING EROSION CONDITIONS
 - NATURALIZE STREAM CHANNEL APPEARANCE
 - SHALLOW STEEP SLOPING BANKS, LOWERED FLOODPLAIN & CREATE STABLE GEOMETRY
 - INTRODUCE NATIVE TREES & SHRUBS PLANTED ALONG BANKS
 - IMPROVE WATER QUALITY & POLLUTANT PROCESSING
 - BETTER HABITAT FOR FISH & WILDLIFE
 - ENHANCE AQUATIC & UPLAND HABITAT ZONES
 - DREDGE NORTHERN SECTION OF CREEK TO IMPROVE SMALL WATERCRAFT NAVIGATION

- H NATURAL AREA / LAND LAB**
- PEDESTRIAN BRIDGE - 6 FEET WIDE
 - NATURE TRAIL, CLEARED DIRT PATH OR BARK CHIP SURFACE
 - WETWOODS CONDITIONS - POTENTIAL BOARDWALKS
 - INTRODUCE SHORELINE ACCESS STEEL DECK STRUCTURES
 - PROPOSED ELEVATED OBSERVATION TOWER (LOWER LEVEL WILD BIRD BLIND)
- I EXISTING SALMON ASSOCIATION BUILDING**
- ARCHITECTURALLY ENHANCE OR IMPROVE FACADE
 - PROVIDE SANITARY SEWER CONNECTION



- 1 GRASS PAVER PARKING AREA
- 2 EXISTING TOWER BASES
- 3 EXISTING GAS WELL AREA
- 4 BIKEWAY CONNECTION

MKSK

CORPORATION CREEK RESTORATION/ENHANCEMENT

Stream Restoration Concept

Existing Conditions



PRIMARY ATTRIBUTES

- channelized "ditch" shape
- vertical banks, high flood plain, difficult to maintain
- higher water temperatures and algae blooms
- poor water quality and ability to process pollutants
- poor habitat and for fish and wildlife



Images Produced and Provided by Oxbow River and Stream Restoration Inc.



Proposed Conditions

The "Proposed Conditions" illustration below closely depicts the character and geometry of the stream restoration design and the components utilized by the project. The illustration should not be interpreted as an exact representation of the final design.



PRIMARY ATTRIBUTES

- meandering "naturalized" stream channel
- shallow sloping banks, lowered floodplain, stable geometry
- native trees and shrubs planted along banks
- improved water quality and pollutant processing
- better habitat for fish and wildlife



Decreased Slope Adjacent
To Private Property

Native Plant Material:
Grasses, Trees and Sedges

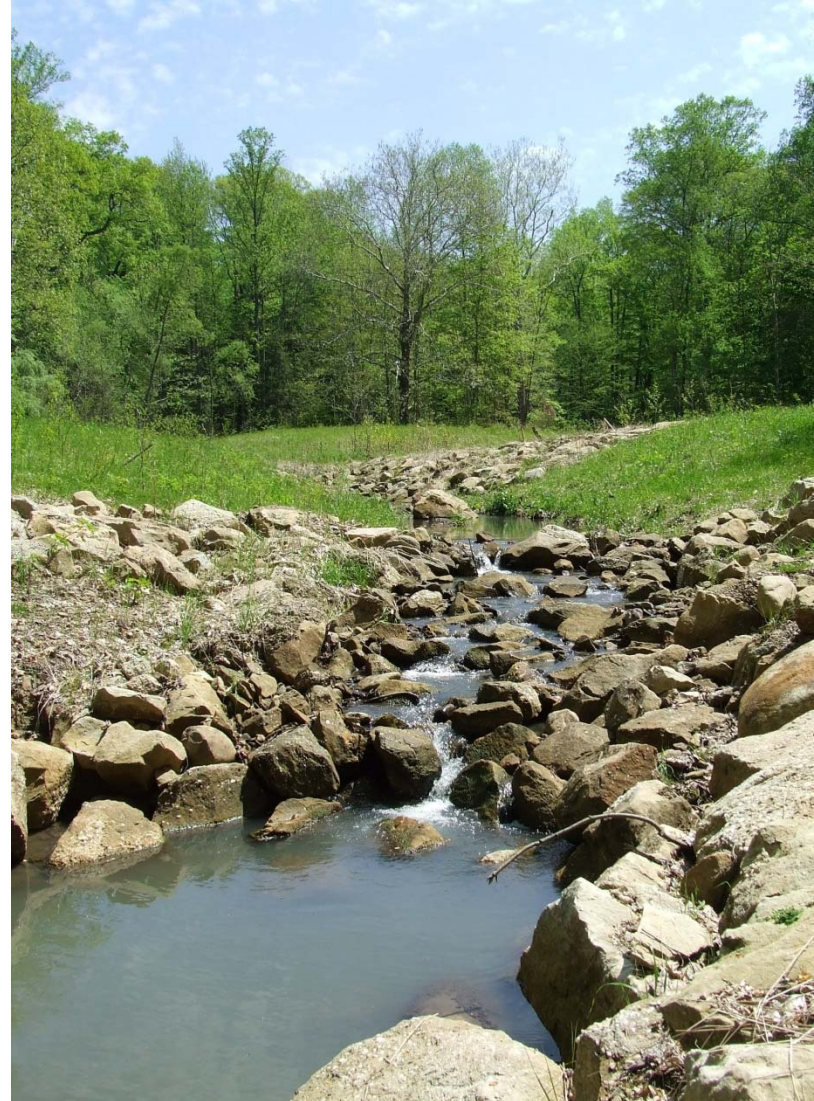
Meandering Stream
Channel

Riffle-Pool Sequences
and In-Stream Features

Western Slope Up To
Adjacent Field

Streamway/Floodplain Created and Stream Channel Moved to the West

CHAGRIN RIVER WATERSHED PARTNERS STREAM RESTORATION PROJECTS



PROPOSED PARKING AREA DEVELOPMENT/AMENITIES



Grass Paver Blocks (overflow)



Stormwater Bioswales



LED Lighting



PICNIC AREA



THREE SEASON SHELTER WITH RESTROOM



GAZEBO



A photograph of a playground in a park. The playground features a large wooden structure with multiple slides and a climbing area, surrounded by green metal safety railings. The ground is covered in wood chips. In the background, there are bare trees and a grassy area with a few people walking. A large tree trunk is visible on the left side of the frame.



Presented to you by: **TE-0537**

Project: **W0107** Sub-Set: **NA**

AGES: 3-12 **DATE:** 09/13/2018

PERKINS **ISO 9001:2015** **MADE IN THE USA**

ADA COMPLIANCE

Overall Dimensions	5		
Minimum Required Strength and Load	2	Overall and Static	3
3-Knot Tensile Tests	2	Off-Axis Tensile Tests	2

DIMENSIONS

MIN "TAIL ZONE" **MAX FALL HEIGHT**

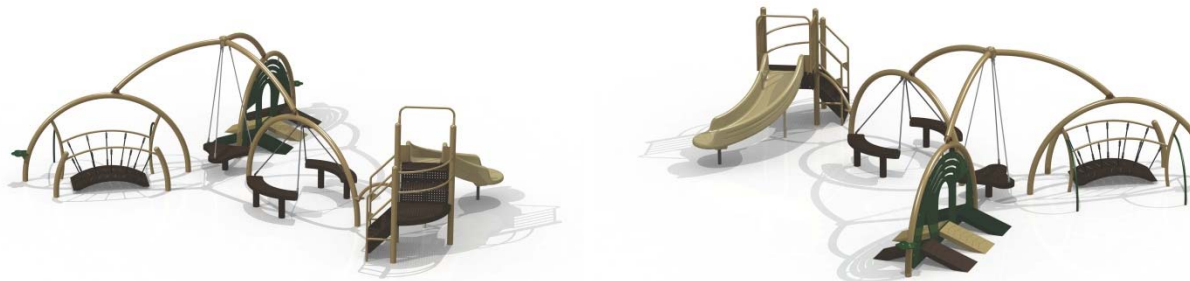
LAYOUT INFORMATION

APPROX. SQ. FT.: 161 **APPROX. KNOTS:** 160

SCALE: 1/8" **DATE:** 09/13/2018

XCENT PLAY

xccentplay.com



Presented to you by:

TE-0537 Model: TRUST Ages: 5-11 Date: 09/12/2013 	ADA COMPLIANCE Wheelchair Access: 2 Minimum Required: 2 Seated Space: 2 Clear Knee Space: 2	DIMENSIONS MIN "FALL ZONE": 6' x 10' - 6" MAX FALL HEIGHT: 6'0"	LAYOUT INFORMATION APPROX. SQ. FT.: APPROX. PERIM.: 40' SCALE: 3/8" = 1'-0" DRAWING NO.: Second Step	 <i>a different playing field.</i> xcenplay.com
---	--	--	---	---

Presented by you to:		FE-0004		ADA COMPLIANCE		DIMENSIONS		LAYOUT INFORMATION		 <i>no different playing field.</i> xceptplay.com	
Project: 16-0026		Name:		Project Components: 1 Minimum Required: 1 General Conditions: 0 Different Type Items: 0		Actual Amount: 3 General Conditions: 3 Different Type Items: 0		MIN "KID ZONE" 100' x 100' MAX PLAY HEIGHT 10'		APPROX. SQ FT: 500 APPROX. PERIM: 500 SCALE: 1/4" DRAWN BY: 3/20/20	
AGED: 3-5 DMR: 100' x 100' x 10'		ISO 9000 ISO 9001 ISO 9002 ISO 9003		MADE IN THE U.S.A.							

Presented by you:		FE-0004		ADA COMPLIANCE		DIMENSIONS		LAYOUT INFORMATION	
Project #: FE-0004	Estimate:			Standard Compliance:	1	MIN "FALL ZONE"		APPROX. SQ FT: N/A	
Ages: J & S	Date: 03/20/2013			Relieves Required:		30' x 10' x 4'		APPROX. PERIN: N/A	
(AGES)	(ISO #S)	MADE IN		different Spacings:	0	NAS FALL HEIGHT:		a different playing field.	
				different Spacing:	0	(offset) Spacing:	3		
								SCALE: N/A	
								DEARIN BY: Scott	

- A PICNIC AREA**
- 1. THREE SEASON PICNIC SHELTER W/ RESTROOM
 - 2. CONCRETE PATIO
 - 3. DRINKING FOUNTAIN (ON BUILDING)
 - 4. SITE FURNITURE (TABLES, BENCHES, TRASH RECEPTACLES)
 - 5. FORMAL LAWN W/ WOOD GAZEBO STRUCTURE (WEDDINGS/SMALL CONCERTS)
 - 6. OPEN RECREATION LAWN AREA
 - 7. REFORESTATION/CAJON VEG. PLANTING
 - 8. CREATE FOUR SEASONS ENHANCEMENT: PROVIDE BUFFER & SHADE, AND CREATE OR DEFINE VARIOUS PARK SPACES
 - 9. SITE LIGHTING (SECURITY, EVENING PROGRAM FUNCTIONS)
 - 10. ACCOMMODATE YOUTH FISHING EVENT, TEMPORARY STRUCTURES

- B LAUNCH RAMP AREA**
- 1. IMPROVE OR REPLACE EXISTING STREAM/CHANNEL CULVERT STRUCTURE
 - MIN. 20' VEHICLE & 4' PEDESTRIAN W/ GUARDRAILS/HANDRAILS
 - 2. ASPHALT PAVEMENT & DEFINE ROADWAY/PARKING AREAS
 - 22' WIDE ROADWAY & 12' X 65' TRAILER SPACES (W20)
 - 3. CREATE ASPHALT SETBACK BUFFER ZONES
 - 4. STREAM BANKS/CORRIDOR, GAS WELL EQUIPMENT, ELECTRIC TRANSMISSION TOWER BASES (INTRODUCE VEHICULAR GUARD RAIL AT TOWER BASES)
 - 5. PROVIDE HEAVY DUTY SCORED CONCRETE PAVEMENT ABOVE EXISTING RAMP
 - 6. INTRODUCE PEDESTRIAN AGGREGATE TRAIL LINKAGE TO PICNIC AREA/RESTROOMS (INSTALL VEHICULAR GATES)

- C WATERCRAFT RENTAL**
- 1. RELOCATE CANOE/KAYAK CONCESSION RENTAL AREA
 - 2. SMALL/SEMI-ENCLOSED STRUCTURE, TRANSPORT/TRAILER AREA, EQUIPMENT LAYOUT (IE LIFE PRESERVERS, PADDLES, ETC.)

- D TRAIL DEVELOPMENT**
- 1. MULTI-USE PATH ASPHALT (10' WIDE) REGIONAL BIKEWAY CONNECTIVITY
 - 2. COMPACTED AGGREGATE PATHWAY (8' WIDE)
 - 3. NATURE TRAILS, NATURAL OR BARK CHIP SURFACE
- E SITE SIGNAGE**
- 1. REGULATORY
 - 2. FACILITY/PARK AREAS, INFORMATIONAL
 - 3. EDUCATIONAL/INTERPRETIVE

- F STREAM/CHANNEL RESTORATION (CORPORATION CREEK)**
- 1. CLEAN UP CONSTRUCTION/TRASH DEBRIS, DETER OR REDUCE EXISTING EROSION CONDITIONS
 - 2. NATURALIZE STREAM CHANNEL APPEARANCE: SHALLOW STEEP SLOPING BANKS, LOWERED FLOODPLAIN & CREATE STABLE GEOMETRY
 - 3. INTRODUCE NATIVE TREES & SHRUBS PLANTED ALONG BANKS
 - 4. IMPROVE WATER QUALITY & POLLUTANT PROCESSING
 - 5. BETTER HABITAT FOR FISH & WILDLIFE
 - 6. ENHANCE AQUATIC & UPLAND HABITAT ZONES
 - 7. DREDGE NORTHERN SECTION OF CREEK TO IMPROVE SMALL WATERCRAFT NAVIGATION

- G NATURAL AREA / LAND LAB**
- 1. PEDESTRIAN BRIDGE - 4 FEET WIDE
 - 2. NATURE TRAIL, CLEARED DIRT PATH OR BARK CHIP SURFACE
 - 3. WETLANDS CONDITIONS - POTENTIAL BOARDWALKS
 - 4. INTRODUCE SHORELINE ACCESS STEEL DECK STRUCTURES
 - 5. PROPOSED ELEVATED OBSERVATION TOWER (LOWER LEVEL WILD BIRD BLIND)
- H EXISTING SALMON ASSOCIATION BUILDING**
- 1. ARCHITECTURALLY ENHANCE OR IMPROVE FACADE
 - 2. PROVIDE SANITARY SEWER CONNECTION



- 1. GRASS PAVER PARKING AREA
- 2. EXISTING TOWER BASES
- 3. EXISTING GAS WELL AREA
- 4. BIKEWAY CONNECTION

MKSK

POND FEATURE

- Fishing
- Ice Skating
- Fountain Element



- A PICNIC AREA**
- THREE SEASON PICNIC SHELTER W/ RESTROOM
 - CONCRETE PATIO
 - DRINKING FOUNTAIN (ON BUILDING)
 - SITE FURNITURE (TABLES, BENCHES, TRASH RECEPTACLES)
 - FORMAL LAWN W/WOOD GAZEBO STRUCTURE (WEDDINGS/SMALL CONCERTS)
 - ADVENTURE/NATURE PLAYGROUND AREA
 - OPEN RECREATION LAWN AREA
 - REFORESTATION/CANOPY VEGETATION
 - CREATE FOUR SEASONS ENHANCEMENT, PROVIDE BUFFER & SHADE, AND CREATE OR DEFINE VARIOUS PARK SPACES
 - SITE LIGHTING (SECURITY, EVENING PROGRAM FUNCTIONS)
 - ACCOMMODATE YOUTH FISHING EVENT, TEMPORARY STRUCTURES

- B LAUNCH RAMP AREA**
- IMPROVE OR REPLACE EXISTING STREAM/CHANNEL CULVERT STRUCTURE
 - MIN. 20' VEHICLE & 4' PEDESTRIAN W/ GUARDRAILS/HANDRAILS
 - ASPHALT PAVEMENT & DEFINE ROADWAY/PARKING AREAS
 - 22' WIDE ROADWAY & 12' X 55' TRAILER SPACES (#20)
 - CREATE ASPHALT SETBACK BUFFER ZONES
 - STREAM BANKS/CORRIDOR, GAS WELL EQUIPMENT, ELECTRIC TRANSMISSION TOWER BASES (INTRODUCE VEHICULAR GUARD RAIL AT TOWER BASES)
 - PROVIDE HEAVY DUTY SCORED CONCRETE PAVEMENT ABOVE EXISTING RAMP
 - INTRODUCE PEDESTRIAN AGGREGATE TRAIL LINKAGE TO PICNIC AREA/RESTROOMS (INSTALL VEHICULAR GATES)

- C WATERCRAFT RENTAL**
- RELOCATE CANOE/KAYAK CONCESSION RENTAL AREA
 - SMALL/SEMI-ENCLOSED STRUCTURE, TRANSPORT/TRAILER AREA, EQUIPMENT LAYOUT, I.E. LIFE PRESERVERS, PADDLES, ETC.
- D TERRACE SEVERE STREAM CHANNEL EMBANKMENT EROSION ZONES & TO ACCOMMODATE SHORT-TERM WATERCRAFT TIE-UP**
- PROPOSED REALIGNMENT OF EXISTING ACCESS ROAD CONNECTION TO CAPTURE / ENHANCE RIVER PARK ENVIRONS

- E TRAIL DEVELOPMENT**
- MULTI-USE PATH ASPHALT (10' WIDE) REGIONAL BIKEWAY CONNECTIVITY
 - COMPACTED AGGREGATE PATHWAY (6' WIDE)
 - NATURE TRAILS, NATURAL OR BARK CHIP SURFACE
- F SITE SIGNAGE**
- REGULATORY
 - FACILITY/PARK AREAS, INFORMATIONAL
 - EDUCATIONAL/INTERPRETIVE

- G STREAM/CHANNEL RESTORATION (CORPORATION CREEK)**
- CLEAN UP CONSTRUCTION/TRASH DEBRIS
 - DETER OR REDUCE EXISTING EROSION CONDITIONS
 - NATURALIZE STREAM CHANNEL APPEARANCE
 - SHALLOW STEEP SLOPING BANKS, LOWERED FLOODPLAIN & CREATE STABLE GEOMETRY
 - INTRODUCE NATIVE TREES & SHRUBS PLANTED ALONG BANKS
 - IMPROVE WATER QUALITY & POLLUTANT PROCESSING
 - BETTER HABITAT FOR FISH & WILDLIFE
 - ENHANCE AQUATIC & UPLAND HABITAT ZONES
 - DREDGE NORTHERN SECTION OF CREEK TO IMPROVE SMALL WATERCRAFT NAVIGATION

- H NATURAL AREA / LAND LAB**
- PEDESTRIAN BRIDGE - 6 FEET WIDE
 - NATURE TRAIL, CLEARED DIRT PATH OR BARK CHIP SURFACE
 - WETWOODS CONDITIONS - POTENTIAL BOARDWALKS
 - INTRODUCE SHORELINE ACCESS STEEL DECK STRUCTURES
 - PROPOSED ELEVATED OBSERVATION TOWER (LOWER LEVEL WILD BIRD BLIND)
- I EXISTING SALMON ASSOCIATION BUILDING**
- ARCHITECTURALLY ENHANCE OR IMPROVE FACADE
 - PROVIDE SANITARY SEWER CONNECTION



- 1 GRASS PAVER PARKING AREA
- 2 EXISTING TOWER BASES
- 3 EXISTING GAS WELL AREA
- 4 BIKEWAY CONNECTION

MKSK

HEIRARCHY OF TRAIL SURFACE ENHANCEMENTS



Asphalt Bikeway



Compacted Aggregated



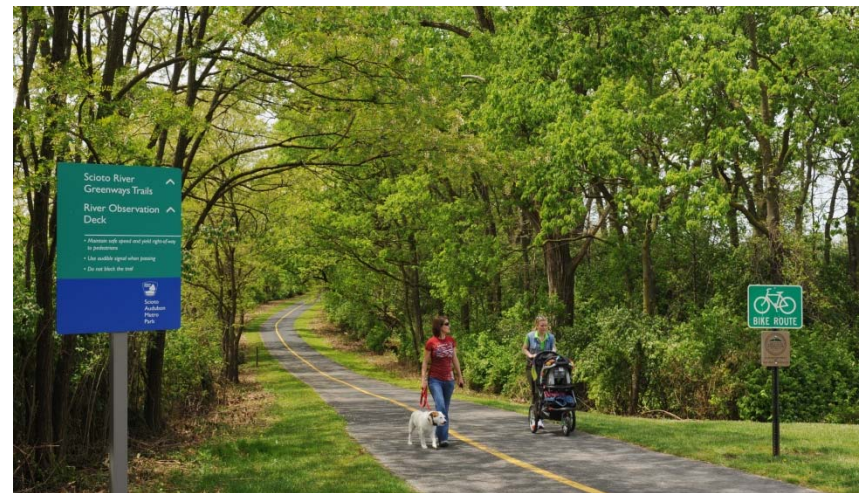
Improved Natural Trail



Multi-purpose Asphalt Trail



Internal Trail Systems



Regional Bikeway Connectivity

PROPOSED CORPORATION CREEK BRIDGE/CULVERT REPLACEMENT



Existing Drainage way Culvert



Pre-cast Concrete



Metal Culvert Structure

- A PICNIC AREA**
- THREE SEASON PICNIC SHELTER W/ RESTROOM
 - CONCRETE PATIO
 - DRINKING FOUNTAIN (ON BUILDING)
 - SITE FURNITURE (TABLES, BENCHES, TRASH RECEPTACLES)
 - FORMAL LAWN W/WOOD GAZEBO STRUCTURE (WEDDINGS/SMALL CONCERTS)
 - ADVENTURE/NATURE PLAYGROUND AREA
 - OPEN RECREATION LAWN AREA
 - REFORESTATION/CANOPY VEGETATION
 - CREATE FOUR SEASONS ENHANCEMENT, PROVIDE BUFFER & SHADE, AND CREATE OR DEFINE VARIOUS PARK SPACES
 - SITE LIGHTING (SECURITY, EVENING PROGRAM FUNCTIONS)
 - ACCOMMODATE YOUTH FISHING EVENT, TEMPORARY STRUCTURES

- B LAUNCH RAMP AREA**
- IMPROVE OR REPLACE EXISTING STREAM/CHANNEL CULVERT STRUCTURE
 - MIN. 20' VEHICLE & 4' PEDESTRIAN W/ GUARDRAILS/HANDRAILS
 - ASPHALT PAVEMENT & DEFINE ROADWAY/PARKING AREAS
 - 22' WIDE ROADWAY & 12' X 55' TRAILER SPACES (#20)
 - CREATE ASPHALT SETBACK BUFFER ZONES
 - STREAM BANKS/CORRIDOR, GAS WELL EQUIPMENT, ELECTRIC TRANSMISSION TOWER BASES (INTRODUCE VEHICULAR GUARD RAIL AT TOWER BASES)
 - PROVIDE HEAVY DUTY SCORED CONCRETE PAVEMENT ABOVE EXISTING RAMP
 - INTRODUCE PEDESTRIAN AGGREGATE TRAIL LINKAGE TO PICNIC AREA/RESTROOMS (INSTALL VEHICULAR GATES)

- C WATERCRAFT RENTAL**
- RELOCATE CANOE/KAYAK CONCESSION RENTAL AREA
 - SMALL/SEMI-ENCLOSED STRUCTURE, TRANSPORT/TRAILER AREA, EQUIPMENT LAYOUT, I.E. LIFE PRESERVERS, PADDLES, ETC.
- D TERRACE SEVERE STREAM CHANNEL EMBANKMENT EROSION ZONES & TO ACCOMMODATE SHORT-TERM WATERCRAFT TIE-UP**
- PROPOSED REALIGNMENT OF EXISTING ACCESS ROAD CONNECTION TO CAPTURE / ENHANCE RIVER PARK ENVIRONS

- E TRAIL DEVELOPMENT**
- MULTI-USE PATH ASPHALT (10' WIDE) REGIONAL BIKEWAY CONNECTIVITY
 - COMPACTED AGGREGATE PATHWAY (6' WIDE)
 - NATURE TRAILS, NATURAL OR BARK CHIP SURFACE
- F SITE SIGNAGE**
- REGULATORY
 - FACILITY/PARK AREAS, INFORMATIONAL
 - EDUCATIONAL/INTERPRETIVE

- G STREAM/CHANNEL RESTORATION (CORPORATION CREEK)**
- CLEAN UP CONSTRUCTION/TRASH DEBRIS
 - DETER OR REDUCE EXISTING EROSION CONDITIONS
 - NATURALIZE STREAM CHANNEL APPEARANCE
 - SHALLOW STEEP SLOPING BANKS, LOWERED FLOODPLAIN & CREATE STABLE GEOMETRY
 - INTRODUCE NATIVE TREES & SHRUBS PLANTED ALONG BANKS
 - IMPROVE WATER QUALITY & POLLUTANT PROCESSING
 - BETTER HABITAT FOR FISH & WILDLIFE
 - ENHANCE AQUATIC & UPLAND HABITAT ZONES
 - DREDGE NORTHERN SECTION OF CREEK TO IMPROVE SMALL WATERCRAFT NAVIGATION

- H NATURAL AREA / LAND LAB**
- PEDESTRIAN BRIDGE - 6 FEET WIDE
 - NATURE TRAIL, CLEARED DIRT PATH OR BARK CHIP SURFACE
 - WETWOODS CONDITIONS - POTENTIAL BOARDWALKS
 - INTRODUCE SHORELINE ACCESS STEEL DECK STRUCTURES
 - PROPOSED ELEVATED OBSERVATION TOWER (LOWER LEVEL WILD BIRD BLIND)
- I EXISTING SALMON ASSOCIATION BUILDING**
- ARCHITECTURALLY ENHANCE OR IMPROVE FACADE
 - PROVIDE SANITARY SEWER CONNECTION



- 1 GRASS PAVER PARKING AREA
- 2 EXISTING TOWER BASES
- 3 EXISTING GAS WELL AREA
- 4 BIKEWAY CONNECTION

MKSK

PENINSULA-ENVIRONMENTAL/LAND LAB AREA

Alternative Pedestrian Bridges



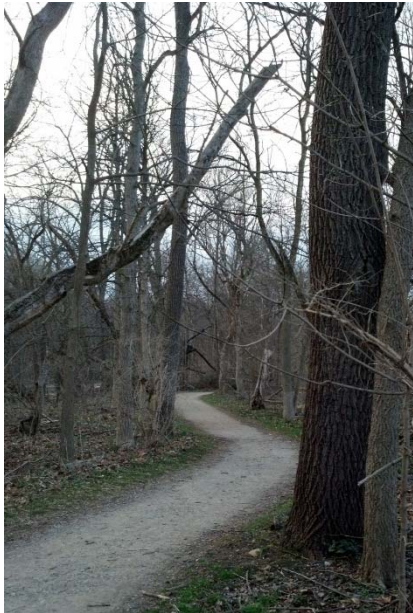
Steel Truss Structure



Simple Suspension Structure



PENINSULA-ENVIRONMENTAL/LAND LAB SITE IMPROVEMENT FEATURES



Improved Natural Trail
Surface



Bird Blind/Elevated Tower



Fishing Access Platform



Wetwood Lot Boardwalk



Observation Tower

- A PICNIC AREA**
- THREE SEASON PICNIC SHELTER W/ RESTROOM
 - CONCRETE PATIO
 - DRINKING FOUNTAIN (ON BUILDING)
 - SITE FURNITURE (TABLES, BENCHES, TRASH RECEPTACLES)
 - FORMAL LAWN W/WOOD GAZEBO STRUCTURE (WEDDINGS/SMALL CONCERTS)
 - ADVENTURE/NATURE PLAYGROUND AREA
 - OPEN RECREATION LAWN AREA
 - REFORESTATION/CANOPY VEGETATION
 - CREATE FOUR SEASONS ENHANCEMENT, PROVIDE BUFFER & SHADE, AND CREATE OR DEFINE VARIOUS PARK SPACES
 - SITE LIGHTING (SECURITY, EVENING PROGRAM FUNCTIONS)
 - ACCOMMODATE YOUTH FISHING EVENT, TEMPORARY STRUCTURES

- B LAUNCH RAMP AREA**
- IMPROVE OR REPLACE EXISTING STREAM/CHANNEL CULVERT STRUCTURE
 - MIN. 20' VEHICLE & 4' PEDESTRIAN W/ GUARDRAILS/HANDRAILS
 - ASPHALT PAVEMENT & DEFINE ROADWAY/PARKING AREAS
 - 22' WIDE ROADWAY & 12' X 55' TRAILER SPACES (#20)
 - CREATE ASPHALT SETBACK BUFFER ZONES
 - STREAM BANKS/CORRIDOR, GAS WELL EQUIPMENT, ELECTRIC TRANSMISSION TOWER BASES (INTRODUCE VEHICULAR GUARD RAIL AT TOWER BASES)
 - PROVIDE HEAVY DUTY SCORED CONCRETE PAVEMENT ABOVE EXISTING RAMP
 - INTRODUCE PEDESTRIAN AGGREGATE TRAIL LINKAGE TO PICNIC AREA/RESTROOMS (INSTALL VEHICULAR GATES)

- C WATERCRAFT RENTAL**
- RELOCATE CANOE/KAYAK CONCESSION RENTAL AREA
 - SMALL/SEMI-ENCLOSED STRUCTURE, TRANSPORT/TRAILER AREA, EQUIPMENT LAYOUT, I.E. LIFE PRESERVERS, PADDLES, ETC.
- D TERRACE SEVERE STREAM CHANNEL EMBANKMENT EROSION ZONES & TO ACCOMMODATE SHORT-TERM WATERCRAFT TIE-UP**
- PROPOSED REALIGNMENT OF EXISTING ACCESS ROAD CONNECTION TO CAPTURE / ENHANCE RIVER PARK ENVIRONS

- E TRAIL DEVELOPMENT**
- MULTI-USE PATH ASPHALT (10' WIDE) REGIONAL BIKEWAY CONNECTIVITY
 - COMPACTED AGGREGATE PATHWAY (6' WIDE)
 - NATURE TRAILS, NATURAL OR BARK CHIP SURFACE
- F SITE SIGNAGE**
- REGULATORY
 - FACILITY/PARK AREAS, INFORMATIONAL
 - EDUCATIONAL/INTERPRETIVE

- G STREAM/CHANNEL RESTORATION (CORPORATION CREEK)**
- CLEAN UP CONSTRUCTION/TRASH DEBRIS
 - DETER OR REDUCE EXISTING EROSION CONDITIONS
 - NATURALIZE STREAM CHANNEL APPEARANCE
 - SHALLOW STEEP SLOPING BANKS, LOWERED FLOODPLAIN & CREATE STABLE GEOMETRY
 - INTRODUCE NATIVE TREES & SHRUBS PLANTED ALONG BANKS
 - IMPROVE WATER QUALITY & POLLUTANT PROCESSING
 - BETTER HABITAT FOR FISH & WILDLIFE
 - ENHANCE AQUATIC & UPLAND HABITAT ZONES
 - DREDGE NORTHERN SECTION OF CREEK TO IMPROVE SMALL WATERCRAFT NAVIGATION

- H NATURAL AREA / LAND LAB**
- PEDESTRIAN BRIDGE - 6 FEET WIDE
 - NATURE TRAIL, CLEARED DIRT PATH OR BARK CHIP SURFACE
 - WETWOODS CONDITIONS - POTENTIAL BOARDWALKS
 - INTRODUCE SHORELINE ACCESS STEEL DECK STRUCTURES
 - PROPOSED ELEVATED OBSERVATION TOWER (LOWER LEVEL WILD BIRD BLIND)
- I EXISTING SALMON ASSOCIATION BUILDING**
- ARCHITECTURALLY ENHANCE OR IMPROVE FACADE
 - PROVIDE SANITARY SEWER CONNECTION



- 1 GRASS PAVER PARKING AREA
- 2 EXISTING TOWER BASES
- 3 EXISTING GAS WELL AREA
- 4 BIKEWAY CONNECTION

MKSK

